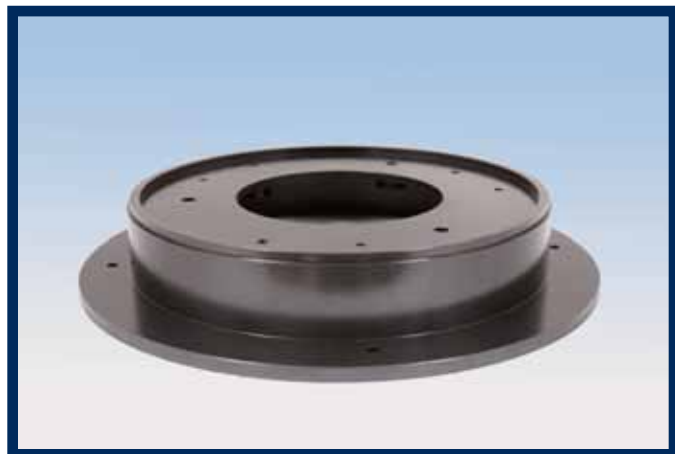




D264 SERIES RETROFIT ADAPTER



FEATURES / BENEFITS

- ▲ Allows for simple retrofit onto existing incandescent fixture
- ▲ Eliminates the need to completely remove the old fixture
- ▲ Utilizes a simple socket based electrical interface. No wiring on the tower
- ▲ Rugged cast design
- ▲ Designed to interface with most existing fixtures in the market
- ▲ Reduces retrofit time for an LED Beacon to a small fraction of what would be required for a complete fixture removal

APPLICATION

- ▲ The Dialight D264 Series retrofit adapter allows for simple retrofit of a new LED Beacon to an existing incandescent base eliminating the need to fully dismantle the old fixture. By simply removing the top half of the existing incandescent light, the retrofit adapter securely mounts to the existing hinge. Utilizing the fixed locating studs the new LED Beacon mounts simply on top. Power is supplied to the new beacon through a simple socket interface connection making it no more difficult than installing a new lamp.

MATERIALS/FINISH

- ▲ The 264 Series Beacon Retrofit Adapter is designed for durability made from cast aluminum with all stainless steel hardware.

ORDERING INFORMATION

Product	Description
D264-3002	Retrofit Adapter

Dialight Europe Ltd.

Exning Road, Newmarket, England, CB8 0AX
 Tel: +44 (0) 1638 666541 • Fax: +44 (0) 1638 561735
 www.dialight-obstruction-lights.com



A Subsidiary of Dialight PLC



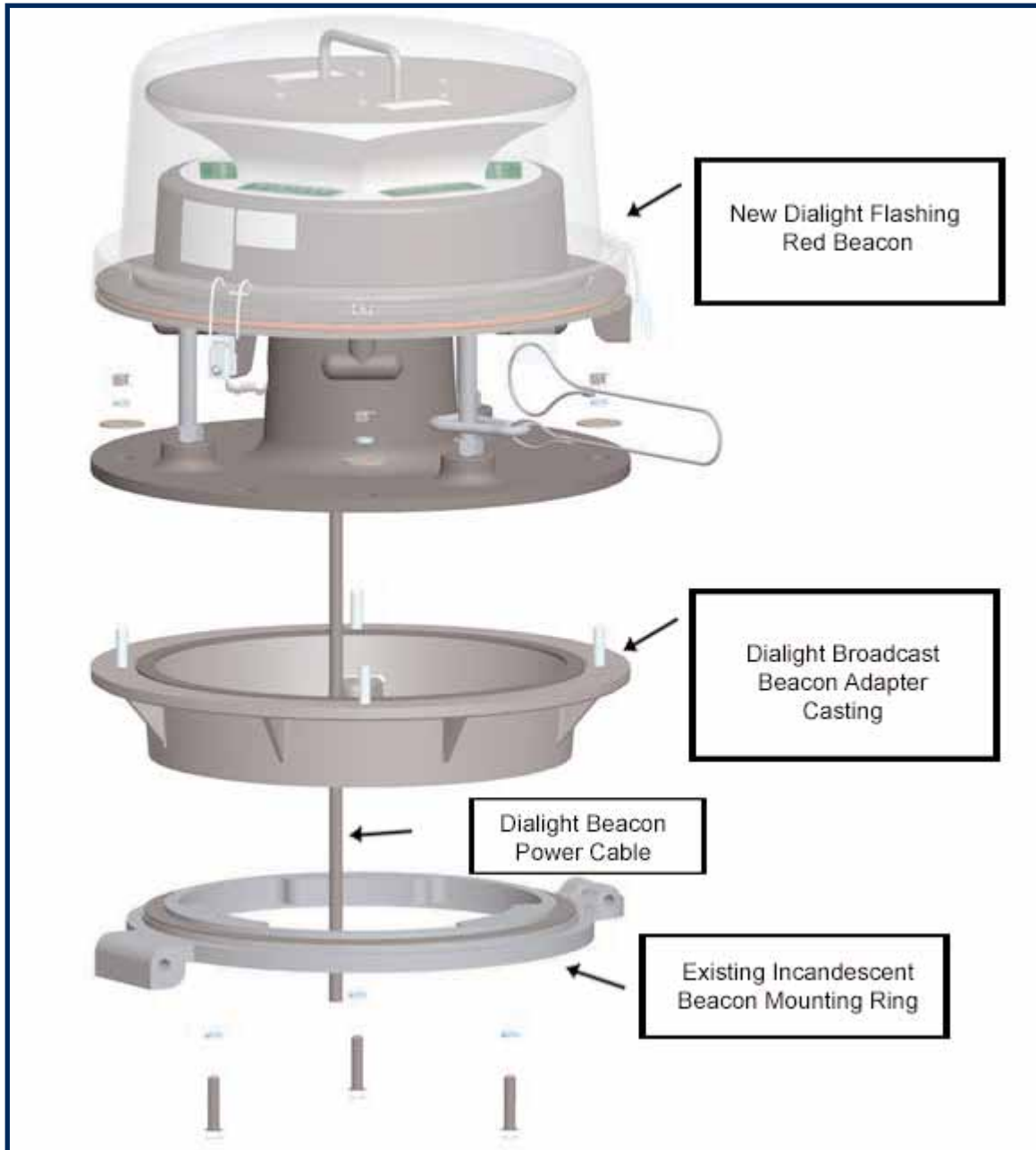
Dialight Corporation

1501 Route 34 South • Farmingdale, NJ 07727 USA
 Tel: (1) 732-919-3119 • Fax: (1) 732-751-5778
 www.dialight.com



MDTF264RETRO_01

MECHANICAL DRAWING



Dialight Europe Ltd.

Exning Road, Newmarket, England, CB8 0AX
 Tel: +44 (0) 1638 666541 • Fax: +44 (0) 1638 561735
www.dialight-obstruction-lights.com



A Subsidiary of Dialight PLC



Dialight Corporation

1501 Route 34 South • Farmingdale, NJ 07727 USA
 Tel: (1) 732-919-3119 • Fax: (1) 732-751-5778
www.dialight.com



MDTF264RETRO_01